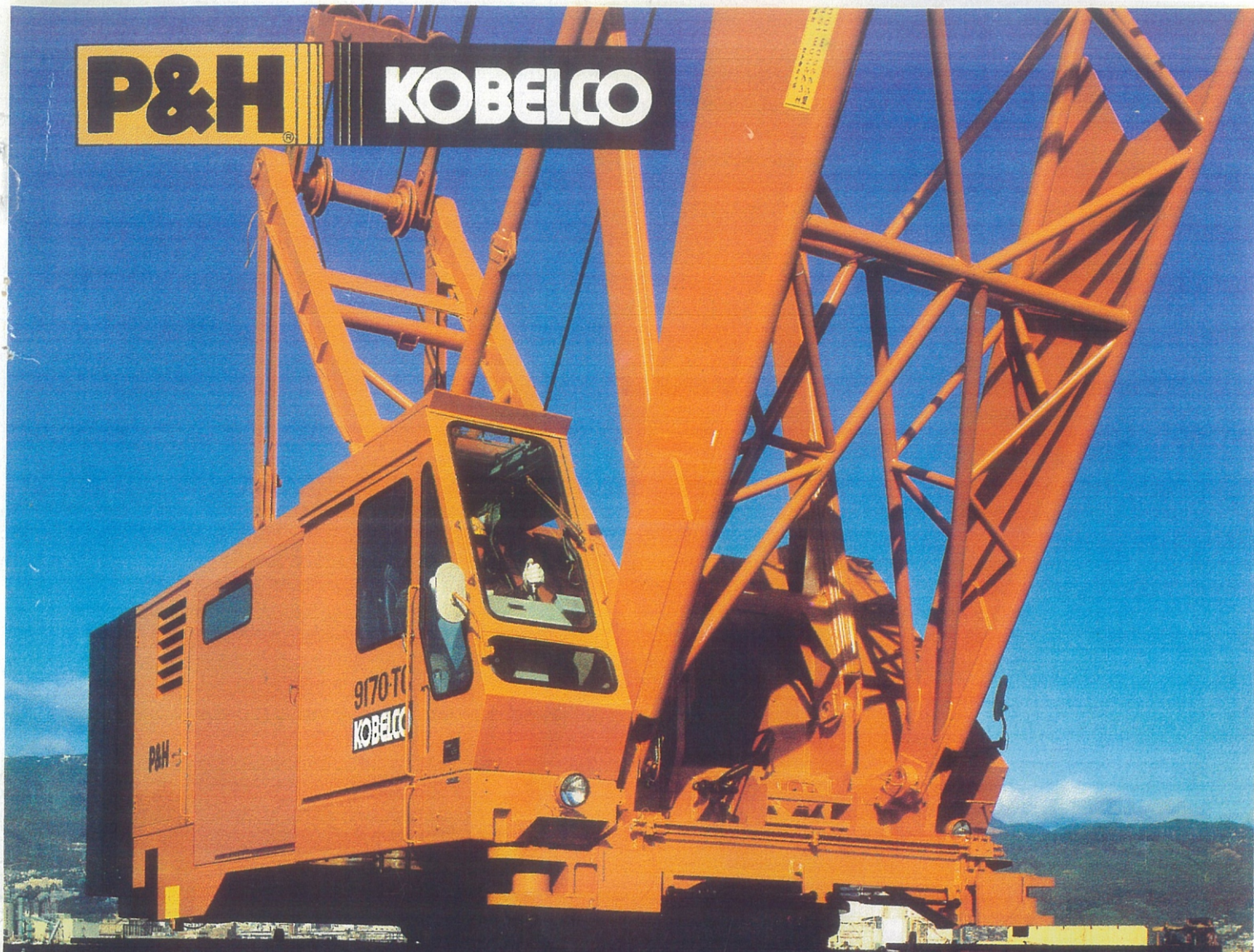


P&H **KOBELCO**



9170-TC

150-M ton Truck Crane

B

BARKAT HIRING CO.

FORK-LIFT & CRANE OWNERS

11 / 12 / 13, Shroff Bhuvan, 1st Floor, 159, P. D'Mello Road,
Carnac Bunder, Mumbai - 400 001.

Phone : 2261 3009 / 2262 1448 / 2261 3870 • Fax : 91-22-2261 5990

E-mail : barkat@bom5.vsnl.net.in

Mob. : AMAR BEDI - 98200 28580 • PREET BEDI - 98200 22719.

Available in 3.05 m (10'), 6.10 m (20'), 9.14 m (30') and 12.19 m (40') long. 12.19 m (40') boom insert will be used for boom length 57.91 m (190') or longer.

BASIC JIB (OPTIONAL)

Three piece, open throat tubular lattice type, having single jib point sheave. Sections are pin connected. High tensile steel chords all welded. Jib extendible to 27.43 m (90'). For lifts not exceeding 14,000 kg (30,900 lbs.). Jib cannot be extended on heavy duty tip.

Basic length	12.19 m (40')
Jib base section	3.05 m (10')
Jib insert	6.10 m (20')
Jib tip section	3.05 m (10')

JIB INSERT SECTIONS (OPTIONAL)

Jib insert available for extension, tubular lattice type, high tensile steel chords, all welded, pin connections. Available in 6.10 m (20') and 9.14 m (30') long.

MAST

9.75 m (32') long. Two legs rectangular box section cross laced high tensile steel and all welded. Required for all booms.



HOOK BLOCKS

25 metric ton block with single sheave, swivel hook, safety latch and three (3) parts hoist line — standard also available as optional.

65 metric ton block with three sheaves, swivel hook, safety latch and seven (7) parts hoist line — optional.

150 metric ton block with seven sheaves, swivel hook, safety latch and fourteen (14) parts hoist line — optional.

13.5 metric ton weighted ball hook with safety latch for jib — optional.

DIAMETER OF WIRE ROPE

Hoist wire rope	28 mm (1.10")
Jib hoist wire rope — optional	24 mm (0.94")
Boom hoist wire rope (16 parts line)	20 mm (0.79")
Boom suspension wire rope (4 parts line)	30 mm (1.18")
Jib suspension wire rope — optional	24 mm (0.94")
Intermediate boom suspension wire rope — optional	22 mm (0.87")

[Required when boom length is 57.91 m (190') or longer]

BOOM HOIST REEVING

Sixteen (16) parts line.

BOOM BACKSTOPS

Telescoping type with spring bumper. Recommended for all boom length.

CABLE GUIDE ROLLERS (OPTIONAL)

Use as required to eliminate wire rope interference. Recommended for all boom length.

WORKING WEIGHT

Working weight Approx. 107,000 kg (235,900 lbs.)
Including 15.24 m (50') heavy duty boom, 150 metric ton hook block, 32,600 kg (71,900 lbs.) counterweights and front bumper weight.

DRUM WORKING DATA

Function		Front Drum	Rear Drum	Boom Hoist Drum
		Main hoist line	Jib hoist line	Boom hoist line
Pitch dia	mm (in.)	518 (20.39)	514 (20.24)	405 (15.94)
Drum length	mm (in.)	495 (19.49)	486 (19.13)	290 (11.42)
Wire rope dia	mm (in.)	28 (1.10)	24 (0.94)	20 (0.79)
Capacity Total	m (ft.)	275 (902)	317 (1,040)	146 x 2 (479 x 2)
*Line speed	Hoisting	52 (170.6)	52 (170.6)	21 (68.9)
	Lowering	30 (98.4)	30 (98.4)	14 (45.9)
*Line pull	kg (lbs.)	15,000 (33,000)	15,000 (33,000)	—

Line speed and line pull marked with * are based on single line and 1st layer of rope and torque converter output shaft at 1,200 rpm. In case of low speed transmission, the line speed becomes one half of the above figures.

TOWER CRANE ATTACHMENTS



TOWER BOOM

Lattice type tubular boom consisting of a tapered base section, two inserts (or three inserts) and a cap section. Sections are pin connected. High tensile steel chords all welded. Tower boom extendible to 48.77 m (160').

Length in four sections	33.53 m (110')
Base section	7.62 m (25')
1-insert	9.14 m (30')
1-insert	9.14 m (30')
Cap section	7.62 m (25')

TOWER INSERT SECTIONS (OPTIONAL)

Tower insert available for extension. Available in 3.05 m (10'), 6.10 m and 9.14 m (30') long.

JIB

Four piece, open throat tubular lattice type, having single jib point sheave. Sections are pin connected. High tensile steel cords all welded. Jib extendible to 36.58 m (120').

Length in four sections	21.34 m (70')
Base section	6.10 m (20')
1-insert	6.10 m (20')
1-insert	3.05 m (10')
Tip section	6.10 m (20')

JIB INSERT SECTIONS (OPTIONAL)

Jib insert available for extension. Available in 6.10 m (20') and 9.14 m (30') long.

HOOK BLOCK

25 metric ton block with single sheave, swivel hook, safety latch and two (2) parts hoist line.

DIAMETER OF WIRE ROPE

Hoist wire rope	28 mm (1.10")
Tower hoist wire rope	20 mm (0.79")
Jib hoist wire rope	24 mm (0.94")
Tower suspension wire rope	30 mm (1.18")
Jib suspension wire rope (upper)	32 mm (1.26")
Jib suspension wire rope (lower)	36 mm (1.42")

TOWER BOOM BACKSTOPS

Telescoping type with spring bumper.

WORKING WEIGHT

Working weight approx. 125,000 kg (275,600 lbs.)
Including 48.77 m (160') tower boom, 36.58 m (120') jib, 25 metric ton hook block and 32,600 kg (71,900 lbs.) counterweights and front bumper weight.

DRUM WORKING DATA

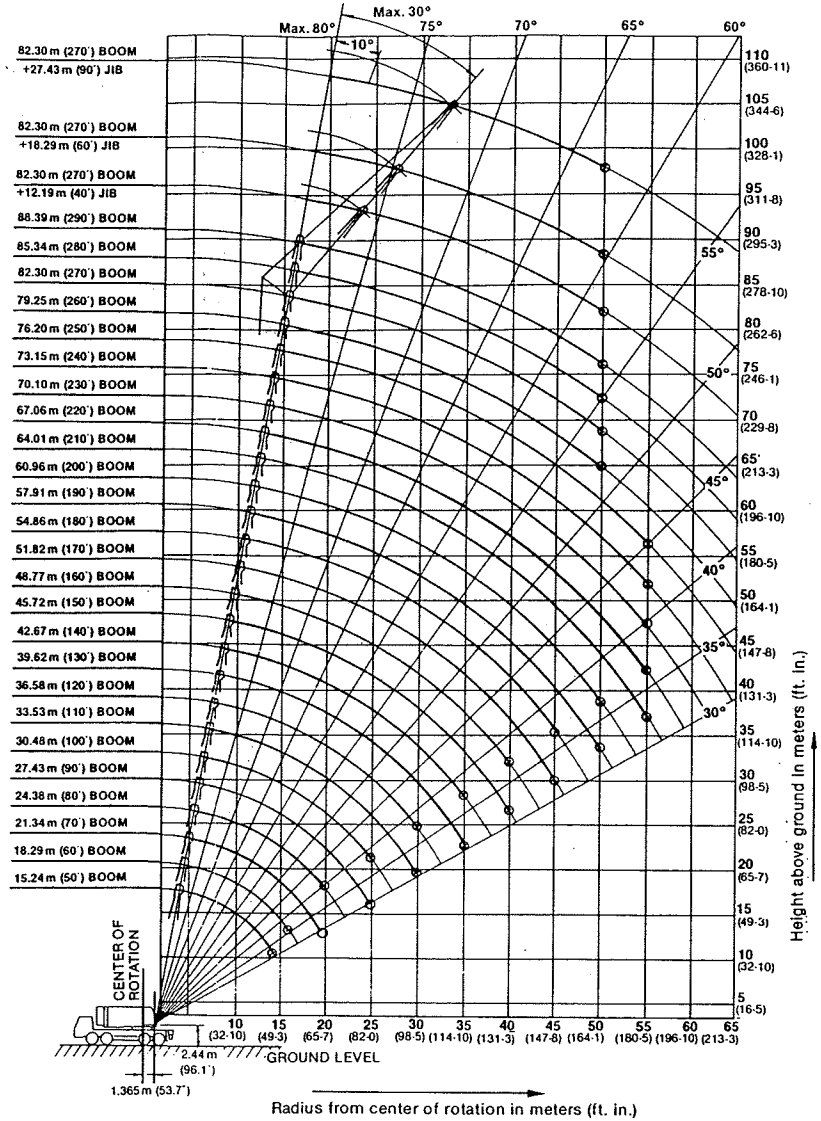
Function		Front Drum	Rear Drum	Boom Hoist Drum
		Load line	Jib hoist line	Tower hoist line
Pitch dia	mm (in.)	518 (20.39)	514 (20.24)	405 (15.94)
Drum length	mm (in.)	495 (19.49)	486 (19.13)	290 (11.42)
Wire rope dia	mm (in.)	28 (1.10)	24 (0.94)	20 (0.79)
Capacity Total	m (ft.)	275 (902)	317 (1,040)	146 x 2 (479 x 2)
*Line Speed	Hoisting	52 (170.6)	52 (170.6)	21 (68.9)
	Lowering	30 (98.4)	30 (98.4)	14 (45.9)
*Line pull	kg (lbs.)	15,000 (33,000)	15,000 (33,000)	—

Line speed and line pull marked with * are based on single line and 1st layer of rope and torque converter output shaft at 1,200 rpm. In case of low speed transmission, the line speed becomes one half of the above figures.

150-M ton Truck Crane

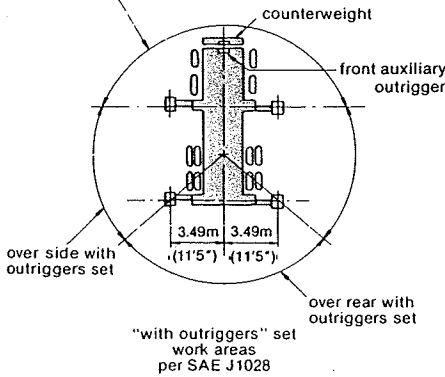
Working Ranges

88.39m Boom
82.30m Boom + 27.43m Jib



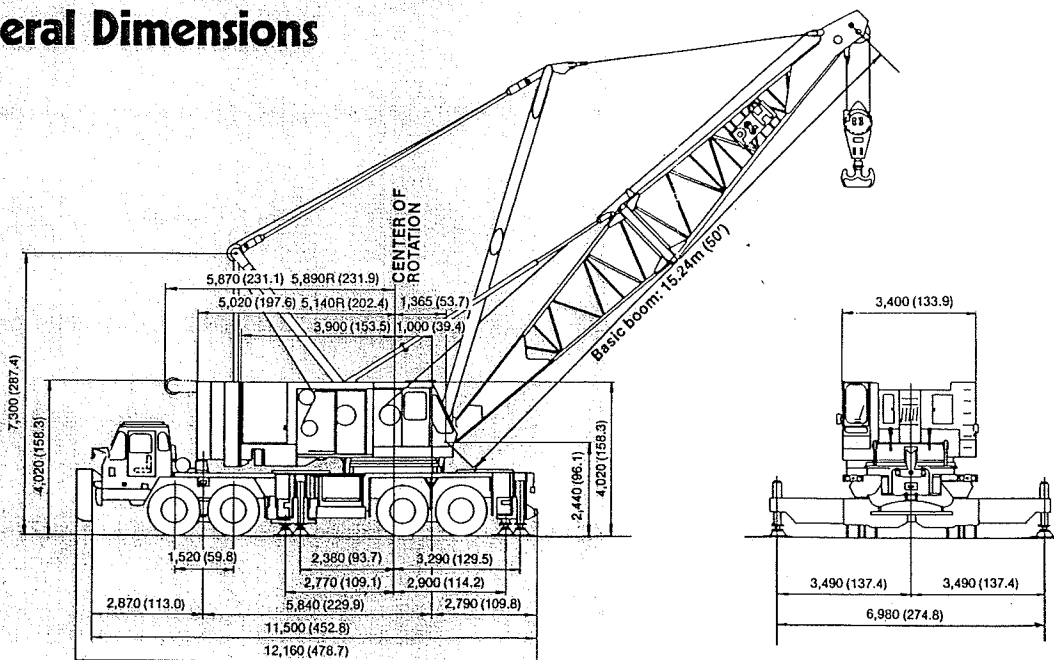
WORKING AREAS

Operation Within "Over Side Outriggers Set" Ratings in this sector are approved only when (optional) front auxiliary outrigger is set. Maximum rated load is 65 metric ton.



General Dimensions

Unit: mm (in.)



Lifting Capacities

WITH LIGHT DUTY TIP

RATED CRANE LOADS IN KGS (LBS.) — MAIN BOOM IN OVER SIDE AND REAR WORK AREAS WITH OUTRIGGERS FULLY EXTENDED AND SET

Operating Radius in Meters (Ft.-In.)	27.43 m (90') Boom	30.48 m (100') Boom	33.53 m (110') Boom	36.58 m (120') Boom	39.62 m (130') Boom	42.67 m (140') Boom	45.72 m (150') Boom	48.77 m (160') Boom	51.82 m (170') Boom	54.86 m (180') Boom	57.91 m (190') Boom	60.96 m (200') Boom	64.01 m (210') Boom	67.06 m (220') Boom	70.10 m (230') Boom	73.15 m (240') Boom	76.20 m (250') Boom	79.25 m (260') Boom	82.30 m (270') Boom	85.34 m (280') Boom	88.39 m (290') Boom	Operating Radius in Meters (Ft.-In.)		
7.0 (23-0)	65,000 (143,300)																					7.0 (23-0)		
8.0 (26-3)	65,000 (143,300)	65,000 (143,300)																					8.0 (26-3)	
9.0 (29-6)	64,000 (141,100)	63,700 (140,400)	62,500 (137,800)	61,900 (136,500)																			9.0 (29-6)	
10.0 (32-10)	56,200 (123,900)	56,000 (123,500)	55,900 (123,200)	55,800 (123,000)	52,500 (115,700)	50,300 (110,900)																	10.0 (32-10)	
12.0 (39-4)	42,400 (93,500)	42,300 (93,300)	42,200 (93,000)	42,100 (92,800)	42,000 (92,600)	41,900 (92,400)	41,800 (92,200)	39,700 (87,500)	36,600 (80,700)														12.0 (39-4)	
14.0 (45-11)	33,800 (74,500)	33,700 (74,300)	33,600 (74,100)	33,500 (73,900)	33,400 (73,600)	33,300 (73,400)	33,200 (73,200)	33,000 (72,800)	32,900 (72,500)	31,900 (70,300)	31,300 (69,000)	28,600 (63,100)											14.0 (45-11)	
16.0 (52-6)	28,000 (61,700)	27,800 (61,300)	27,700 (61,100)	27,600 (60,800)	27,500 (60,600)	27,400 (60,400)	27,300 (60,200)	27,100 (59,700)	27,000 (59,500)	26,900 (59,300)	27,000 (59,500)	26,800 (59,100)	25,200 (55,600)	23,200 (51,100)	21,100 (46,500)	18,900 (41,700)							16.0 (52-6)	
18.0 (59-1)	23,700 (52,200)	23,600 (52,000)	23,500 (51,800)	23,400 (51,600)	23,200 (51,100)	23,100 (50,900)	23,000 (50,700)	22,800 (50,300)	22,700 (50,000)	22,600 (49,800)	22,700 (50,000)	22,500 (49,600)	22,300 (49,200)	22,100 (48,700)	20,100 (44,300)	18,200 (40,100)	16,600 (36,600)	14,800 (32,600)	13,100 (28,900)				18.0 (59-1)	
20.0 (65-7)	20,500 (45,200)	20,400 (45,000)	20,300 (44,800)	20,200 (44,500)	20,000 (44,100)	19,900 (43,900)	19,800 (43,700)	19,500 (43,000)	19,400 (42,800)	19,300 (42,500)	19,400 (42,800)	19,200 (42,300)	19,100 (42,100)	19,000 (41,900)	18,900 (41,700)	17,300 (38,100)	15,700 (34,600)	14,100 (31,100)	12,600 (27,800)	11,500 (25,400)	10,500 (23,100)		20.0 (65-7)	
22.0 (72-2)	18,100 (39,900)	17,900 (39,500)	17,700 (39,000)	17,600 (38,800)	17,400 (38,400)	17,200 (37,900)	17,000 (37,300)	16,900 (37,000)	16,800 (36,800)	16,700 (36,600)	16,700 (36,600)	16,700 (36,600)	16,500 (36,400)	16,500 (36,400)	16,500 (36,400)	15,900 (35,100)	14,700 (32,400)	13,400 (29,500)	11,800 (26,000)	10,800 (23,800)	9,900 (21,800)		22.0 (72-2)	
24.0 (78-9)	16,100 (35,500)	15,900 (35,100)	15,700 (34,600)	15,600 (34,400)	15,400 (34,000)	15,300 (33,700)	15,200 (33,500)	14,900 (32,800)	14,800 (32,600)	14,700 (32,400)	14,700 (32,400)	14,600 (32,200)	14,500 (32,000)	14,400 (31,700)	14,400 (31,700)	14,200 (31,300)	13,700 (30,200)	12,400 (27,300)	11,100 (24,500)	10,100 (22,300)	9,300 (20,500)		24.0 (78-9)	
25.0 (82-0)	15,200 (33,500)	14,900 (32,800)																					25.0 (82-0)	
26.0 (85-4)			14,000 (30,900)	13,900 (30,600)	13,700 (30,200)	13,600 (30,000)	13,500 (29,800)	13,200 (29,100)	13,100 (28,900)	13,000 (28,700)	13,000 (28,700)	12,900 (28,400)	12,800 (28,200)	12,700 (28,000)	12,600 (27,800)	12,300 (27,100)	12,300 (27,100)	11,400 (25,100)	10,300 (22,700)	9,500 (20,900)	8,700 (19,200)		26.0 (85-4)	
28.0 (91-10)			12,700 (28,000)	12,600 (27,800)	12,400 (27,300)	12,200 (26,900)	12,100 (26,700)	11,900 (26,200)	11,800 (26,000)	11,700 (25,800)	11,700 (25,800)	11,400 (25,100)	11,400 (25,100)	11,300 (24,900)	11,100 (24,500)	10,800 (23,800)	10,800 (23,800)	10,300 (22,700)	9,600 (21,200)	8,800 (19,400)	8,100 (17,900)		28.0 (91-10)	
30.0 (98-5)			11,500 (25,400)	11,400 (25,100)	11,100 (24,500)	11,000 (24,300)	10,900 (24,000)	10,600 (23,400)	10,500 (23,100)	10,400 (22,900)	10,500 (23,100)	10,200 (22,500)	10,100 (22,300)	10,000 (22,000)	9,900 (21,800)	9,700 (21,600)	9,700 (21,600)	9,200 (20,300)	8,800 (19,400)	8,100 (17,900)	7,500 (16,500)		30.0 (98-5)	
32.0 (105-0)					10,200 (22,500)	10,000 (22,000)	9,900 (21,800)	9,600 (21,200)	9,500 (20,900)	9,400 (20,700)	9,200 (20,300)	9,200 (20,300)	9,100 (20,100)	9,000 (19,800)	8,900 (19,600)	8,800 (19,400)	8,700 (19,200)	8,300 (18,300)	7,900 (17,400)	7,400 (16,300)	6,900 (15,200)	6,400 (14,100)		32.0 (105-0)
34.0 (111-7)					9,400 (20,700)	9,200 (20,300)	9,000 (19,800)	8,700 (19,200)	8,600 (19,000)	8,500 (18,700)	8,500 (18,700)	8,300 (18,300)	8,200 (18,100)	8,100 (17,900)	8,000 (17,700)	7,900 (17,400)	7,700 (17,000)	7,500 (16,500)	7,200 (15,900)	6,700 (14,800)	6,400 (14,100)		34.0 (111-7)	
35.0 (114-10)					8,900 (19,600)	8,800 (19,400)																	35.0 (114-10)	
36.0 (118-1)							8,200 (18,100)	7,900 (17,400)	7,800 (17,200)	7,700 (17,000)	7,700 (17,000)	7,500 (16,500)	7,400 (16,300)	7,300 (16,100)	7,200 (15,900)	7,100 (15,700)	6,900 (15,200)	6,700 (14,800)	6,200 (13,700)	5,800 (12,800)	5,300 (11,700)		36.0 (118-1)	
38.0 (124-8)							7,600 (16,800)	7,300 (16,100)	7,200 (15,900)	7,100 (15,700)	7,100 (15,700)	6,800 (15,000)	6,700 (14,800)	6,600 (14,600)	6,500 (14,300)	6,400 (14,100)	6,200 (13,700)	6,000 (13,200)	5,900 (13,000)	5,500 (12,100)	5,300 (11,700)		38.0 (124-8)	
40.0 (131-3)							7,000 (15,400)	6,700 (14,800)	6,600 (14,600)	6,500 (14,300)	6,500 (14,300)	6,200 (13,700)	6,100 (13,400)	6,000 (13,200)	5,900 (13,000)	5,700 (12,600)	5,500 (12,100)	5,300 (11,700)	5,200 (11,500)	4,900 (10,800)	4,700 (10,400)		40.0 (131-3)	
42.0 (137-10)									6,100 (13,400)	6,000 (13,200)	5,900 (13,000)	5,600 (12,300)	5,500 (12,100)	5,400 (11,900)	5,300 (11,700)	5,000 (11,000)	4,900 (10,800)	4,700 (10,400)	4,600 (10,100)	4,300 (9,500)	4,100 (9,000)		42.0 (137-10)	
44.0 (144-4)									5,600 (12,300)	5,500 (12,100)	5,400 (11,900)	5,100 (11,200)	5,000 (11,000)	4,900 (10,800)	4,800 (10,600)	4,500 (9,900)	4,400 (9,700)	4,100 (9,000)	4,000 (8,800)	3,700 (8,200)	3,500 (7,700)		44.0 (144-4)	
45.0 (147-8)									5,400 (11,900)	5,300 (11,700)													45.0 (147-8)	
46.0 (150-11)											5,000 (11,000)	4,700 (10,400)	4,500 (9,900)	4,300 (9,500)	4,200 (9,300)	4,000 (8,800)	3,800 (8,400)	3,500 (7,700)	3,400 (7,500)	3,100 (6,800)	2,900 (6,400)		46.0 (150-11)	
48.0 (157-6)											4,500 (9,900)	4,200 (9,300)	4,000 (8,800)	3,800 (8,400)	3,700 (8,200)	3,500 (7,700)	3,300 (7,300)	3,100 (6,800)	3,000 (6,600)	2,700 (6,000)	2,500 (5,500)		48.0 (157-6)	
50.0 (164-1)											4,100 (9,000)	3,800 (8,400)	3,600 (7,900)	3,400 (7,500)	3,300 (7,300)	3,100 (6,800)	2,900 (6,400)	2,700 (6,000)	2,600 (5,700)	2,300 (5,100)	2,100 (4,600)		50.0 (164-1)	
52.0 (170-7)														3,200 (7,100)	3,000 (6,600)	2,900 (6,400)	2,700 (6,000)	2,500 (5,500)					52.0 (170-7)	
54.0 (177-2)														2,900 (6,400)	2,700 (6,000)	2,600 (5,700)	2,400 (5,300)	2,200 (4,900)					54.0 (177-2)	
55.0 (180-5)														2,700 (6,000)	2,500 (5,500)	2,400 (5,300)	2,200 (4,900)	2,000 (4,400)					55.0 (180-5)	

NOTE: Ratings inside of box are limited by strength of materials.

OPERATION OF THIS EQUIPMENT IN EXCESS OF RATED LOADS AND DISREGARD OF INSTRUCTIONS VOIDS THE WARRANTY.

